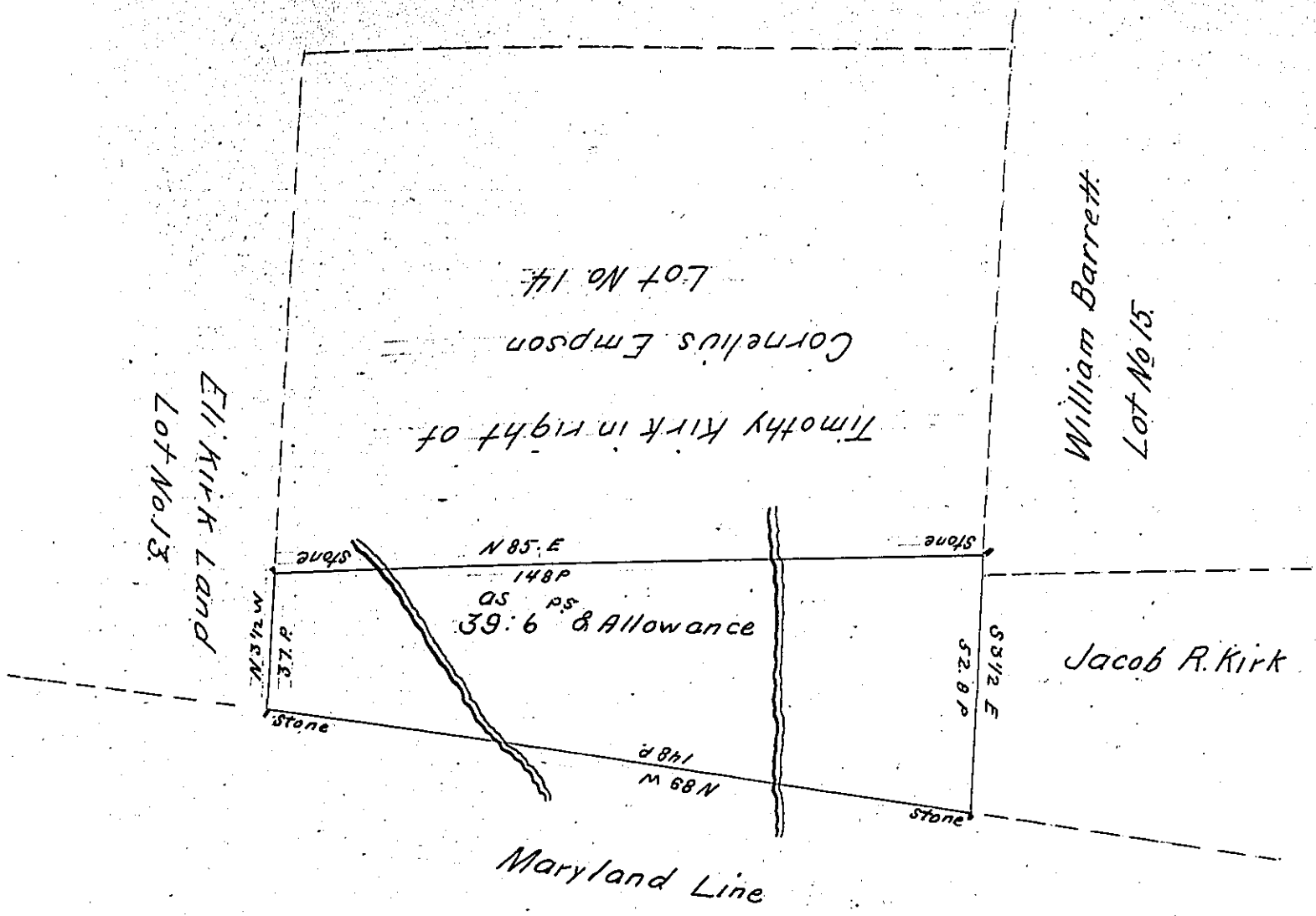


9
15
D



The Above Draught represents a Tract of Land situate part in East & part in West Nottingham Townships Chester County Containing 39 Acres & 6 perches & Allowance Being A part of the Nottingham Lot Land Called Lot No 14 which was Returned into the Surveyor Generals Office for Cornelius Empson by Warrant ^{Dated} in the Year 1702.

Gabriel Hiester Esq^r } pr Arthur Andrews Jr D. S.
Surveyor General }

IN TESTIMONY that the above is a copy of the original remaining on file in the Department of Internal Affairs of Pennsylvania, made conformably to an Act of Assembly approved the 16th day of February, 1833, I have hereunto set my Hand and caused the Seal of said Department to be affixed at Harrisburg, this nineteenth day of August 1904

Joseph R. Brown
Secretary of Internal Affairs.